

Installation Instructions

PART NUMBERS: 76288, 84288, CQT76288

WARNING

To prevent **SERIOUS INJURY, DEATH** or **PROPERTY DAMAGE**:

- **ALWAYS** read, understand and follow warnings and instructions for your hitch **BEFORE** installation. Keep for future reference.
- **DO NOT** cut, weld or modify this receiver.
- **CHECK** all fasteners are tight and your hitch is securely mounted to your vehicle periodically.
- **ALWAYS** read, understand and follow all warnings and instructions for your vehicle and for other accessories you will use with your hitch **BEFORE** use.
- **LOAD** the trailer heavier in front.
- **DO NOT** exceed lower of towing vehicle manufacturer's rating or:

Hitch Type	Max Gross Trailer Weight	Max Tongue Weight
Weight Carrying	7200 lb. (3265 kg)	720 lb. (326 kg)
Weight Distributing	7200 lb. (3265 kg)	720 lb. (326 kg)

- **ALWAYS** wear your seatbelt.
- **SLOW DOWN** when towing, **NEVER** exceed any posted speed limit.
- If **EXCESS SWAY** occurs, take your foot off the gas pedal and hold the steering wheel as steady as possible. **DO NOT** apply your brakes and **DO NOT** speed up.

Installation Instructions

PART NUMBERS: 76288, 84288, CQT76288

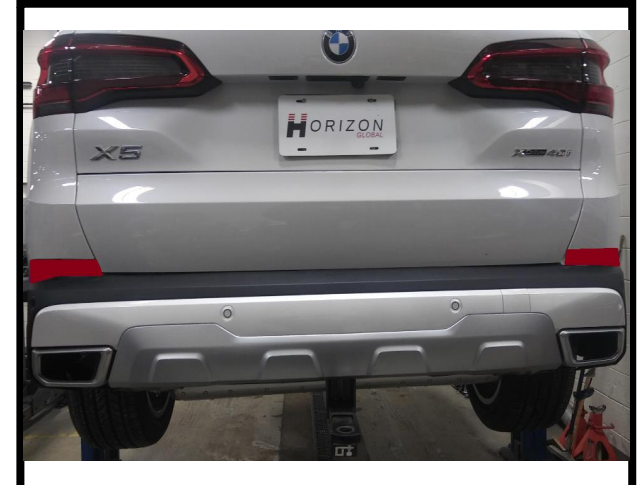
Applications:

Years	Make	Models
2019-Current*	BMW	X5

*Visit our website for the most up to date information regarding application years and trim levels.

Installation Time: 90 min

The time listed above is the average time for professional installers. If you do not feel comfortable performing this installation on your own or are in need of assistance, please contact a professional installer.



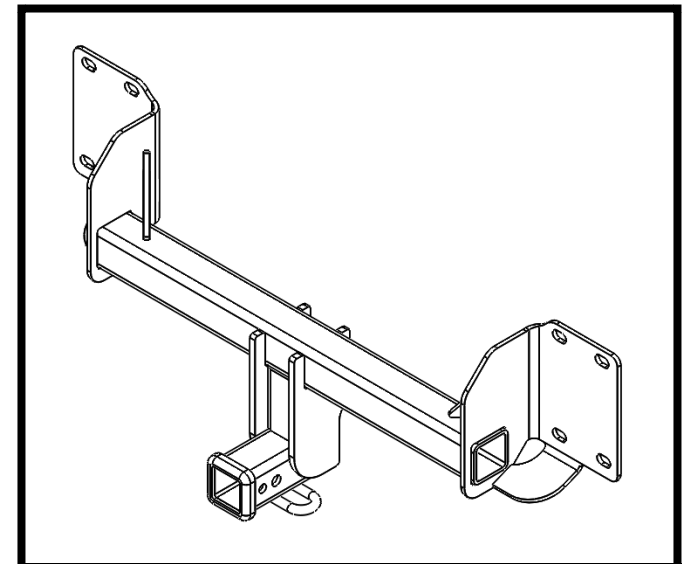
Representative Vehicle Photo

Equipment Required:

Safety Glasses	Ratchet	8 mm 13 mm 18 mm Sockets	Utility Knife	Marker	Drill Bit 3/16"
Torque Wrench	Plastic Rivet gun	6" Socket Extension	Tape Measure	Drill	Plastic Trim Tools

**DO NOT EXCEED LOWER OF TOWING VEHICLE
MANUFACTURER'S RATING OR:**

Hitch Type	Max Gross Trailer Weight	Max Tongue Weight
Weight Carrying	7200 lb. (3265 kg)	720 lb. (326 kg)
Weight Distributing	7200 lb. (3265 kg)	720 lb. (326 kg)



Hitch Illustration

Always wear SAFETY GLASSES when installing hitch

Installation Instructions

PART NUMBERS: 76288, 84288, CQT76288

Fastener Kit: 76288F

①

Qty. (4)

Rivet
Part # 110269



**Fasteners
typical
both sides**

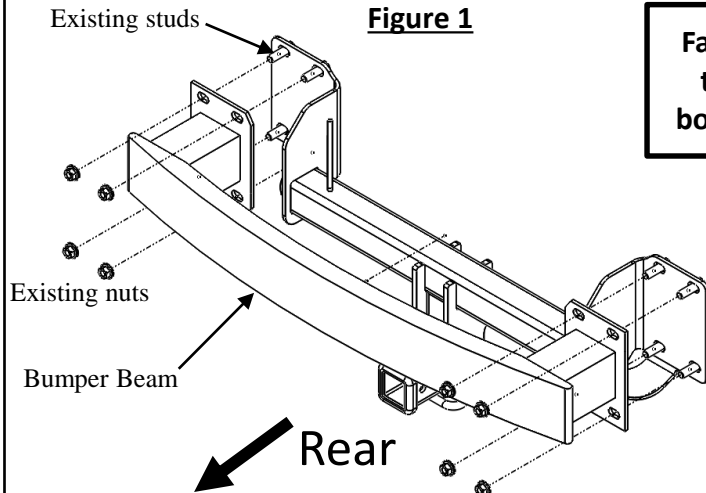


Figure 3



Figure 2

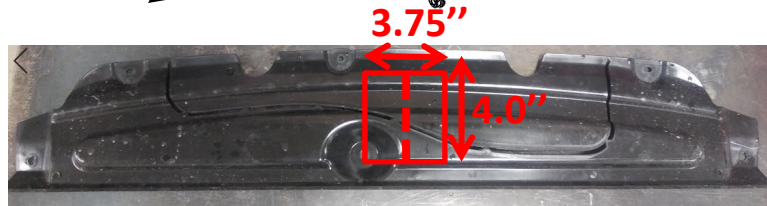


Figure 5

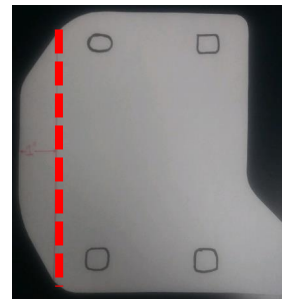


Figure 4

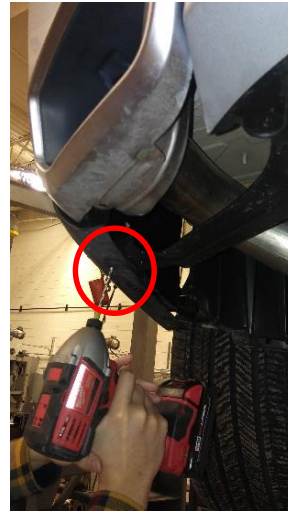
- 1. Remove rear bumper fascia.** (A) Gently pull back wheel well molding with the plastic trim tools to locate a plastic rivet (1 on each side). (B) Use the drill to remove 2 plastic rivets (each side) from the plastic wheel well molding and fascia (See Figure 2). Rivets can not be re-used. Replacements supplied. To remove rivet, insert small center punch or drill bit into center to push pin through. (C) Use a 8mm socket to remove 16 screws from bottom of fascia (8) each side. You will have 3 plastic trim pieces that will come off from this – set them aside for later. (D) Remove 4 push rivets from the top fascia area (Located under the tailgate see Figure 3). Two trim pieces can then be pulled off. (E) Remove reflectors buy using the plastic trim tools. (F) Gently begin to remove the fascia by using your plastic trim tools. Unclip the electrical on the passenger side and remove the fascia.
- 2. Lower exhaust and disconnect sensor wiring:** Use a 13mm socket to remove 2 nuts from the exhaust (1 each side). Next disconnect the back-up sensor wiring and hands free sensor (Not shown). Lower tailgate to access upper mounting fasteners.
- 3. Remove bumper beam** by using a 18mm deep socket on 8 M12 nuts (4 each side). Set the bumper beam to the side. Keep the nuts for hitch installation.
- 4. Trim the bumper beam mounting plate** by 1" (See Figure 4). Repeat this process from the opposite side.
- 5. Raise hitch into position** then sandwich with newly trimmed impact bar.
- 6. Tighten all fasteners to torque specifications. Tighten all M12 fasteners with torque wrench to 65 Lb.-Ft. (88 N*M)**
- 7. Obtain vehicle owners approval before cutting.** Trim fascia using utility knife. (See Figure 5).
- 8. Reinstall all fasteners, bumper panel, interior trim panel, wiring harness, fascia and bottom appearance panel** removed in Steps 1 and 2.

▲ Proper torque is needed to keep the hitch secure to the vehicle when towing.

Note: check hitch frequently, making sure all fasteners and ball are properly tightened. If hitch is removed, plug all holes in trunk pan or other body panels to prevent entry of water and exhaust fumes. A hitch or ball which has been damaged should be removed and replaced. Observe safety precautions when working beneath a vehicle and wear eye protection. Do not cut access or attachment holes with a torch. This product complies with safety specifications and requirements for connecting devices and towing systems of the state of New York, V.E.S.C. Regulation V-5 and SAE J684.

1. Remove rear bumper fascia

(A) Gently pull back wheel well molding with the plastic trim tools to locate a plastic rivet (1 on each side). (B) Use the drill to remove 2 plastic rivets (each side) from the plastic wheel well molding and fascia (See Figure 2). Rivets can not be re-used. Replacements supplied. To remove rivet, insert small center punch or drill bit into center to push pin through.



1. Remove rear bumper fascia

(C) Use a 8mm socket to remove 16 screws from bottom of fascia (8) each side. You will have 3 plastic trim pieces that will come off from this – set them aside for later.



1. Remove rear bumper fascia

(D) Remove 4 push rivets from the top fascia area (Located under the tailgate see Figure 3). Two trim pieces can then be pulled off.



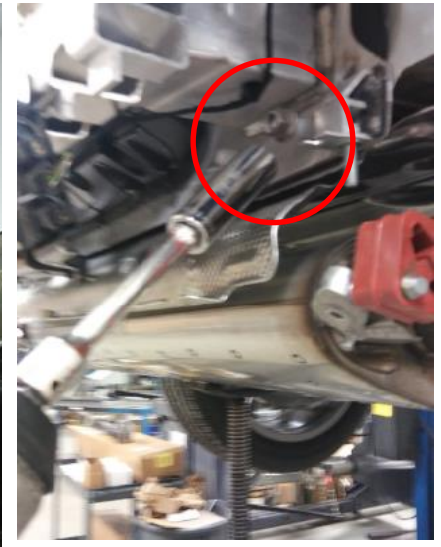
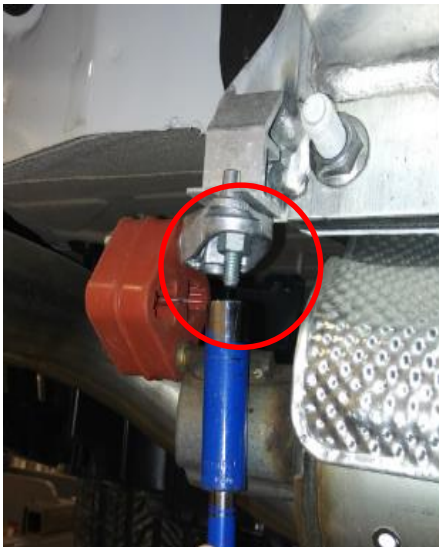
1. Remove rear bumper fascia

(E) Remove reflectors by using the plastic trim tools. (F) Gently begin to remove the fascia by using your plastic trim tools. Unclip the electrical on the passenger side and remove the fascia.

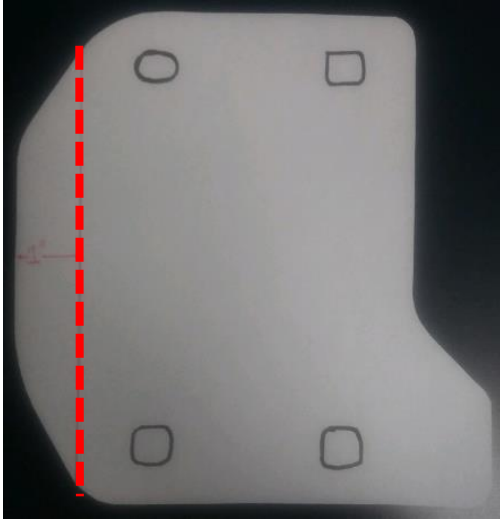


2. Lower exhaust and disconnect sensor wiring: Use a 13mm socket to remove 2 nuts from the exhaust (1 each side). Next disconnect the back-up sensor wiring and hands free sensor (Not shown). Lower tailgate to access upper mounting fasteners.

3. Remove bumper beam by using a 18mm deep socket on 8 M12 nuts (4 each side). Set the bumper beam to the side. Keep the nuts for hitch installation.



4. Trim the impact bars mounting plate by 1" (See Figure 4). Repeat this process from the opposite side.



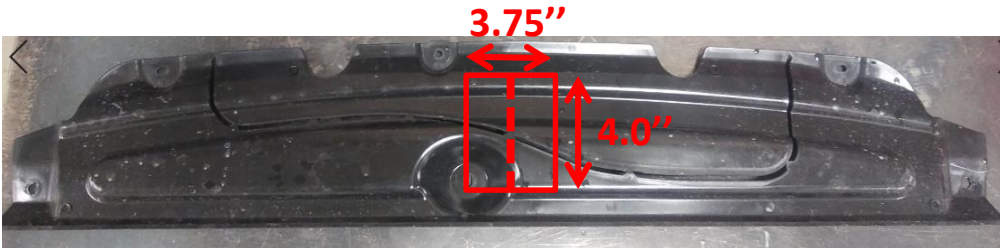
5. Raise hitch into position then sandwich with newly trimmed impact bar.



6. Tighten all fasteners to torque specifications. Tighten all M12 fasteners with torque wrench to 65 Lb.-Ft. (88 N*M)

7. Obtain vehicle owners approval before cutting. Trim fascia using utility knife. (See Figure 5).

8. Reinstall all fasteners, bumper panel, interior trim panel, wiring harness, fascia and bottom appearance panel removed in Steps 1 and 2.



Rely on premium trailer hitches and towing by Draw-Tite if you're looking for quality and efficiency.