

M8x40 - 1ks
 M10x30 - 9ks
 M10x1,25x25 - 1ks
 M12x35 - 4ks
 M12x70 - 2ks (A)
 M12x90 - 2ks (I)
 M12x19 - 4ks (C)



SM8 - 1ks



M10 - 3ks
 M12 - 6ks (A, I)
 M12 - 4ks (C)



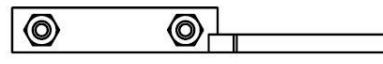
P8 - 1ks



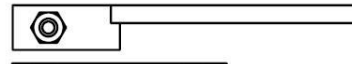
PP10 - 10ks
 PP12 - 6ks (A, I)
 PP12 - 8ks (C)



PR14x25 - 1ks



A -25x5-115 - 1ks



B -25x5-60 - 1ks

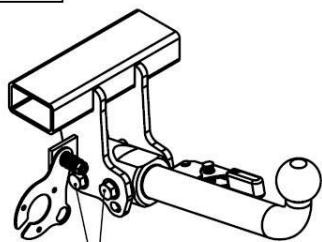


C -25x5-120 - 1ks

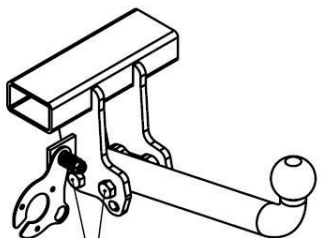


D -25x5-210 - 1ks

C

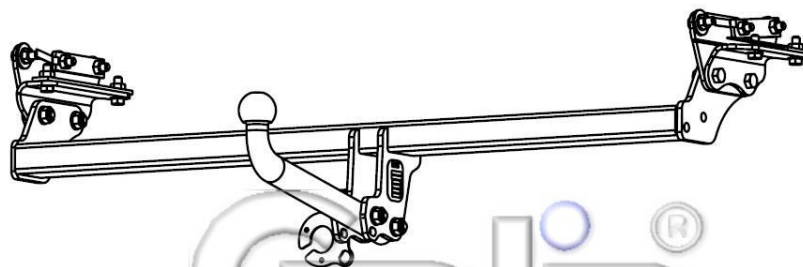


M12x19 - 4ks

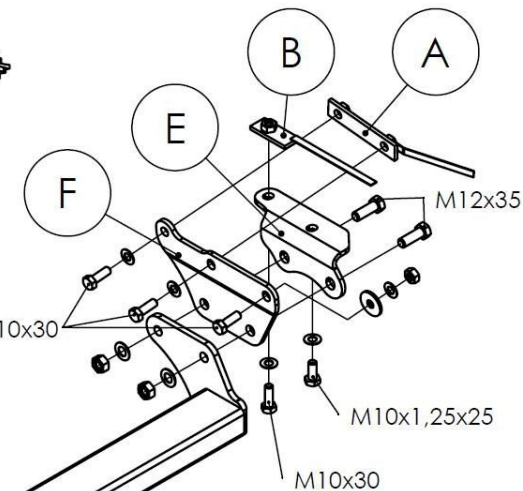


M12x90 - 2ks

I



Galpi®

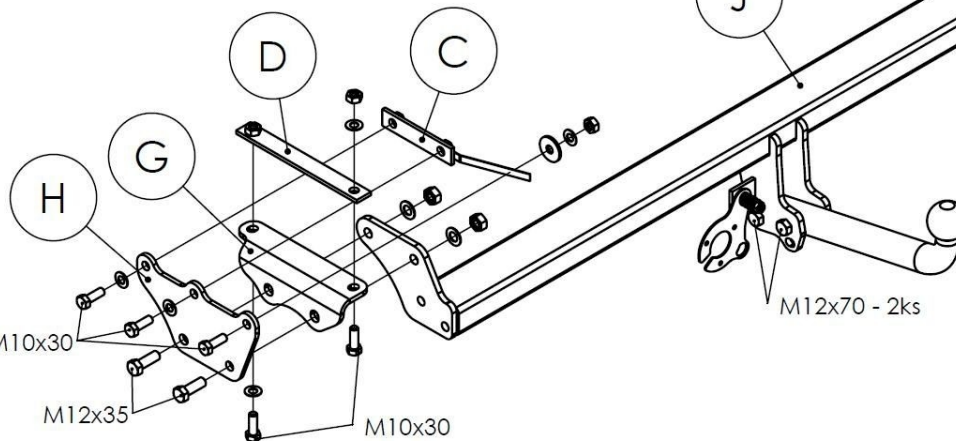


M10x30

M12x35

M10x1,25x25

M10x30



M10x30

M12x35

M10x30

M12x70 - 2ks

AIC 400 12 1

RENAULT KOLEOS
 Kód: R0925(A,I,C) 5. 8. 2014

A